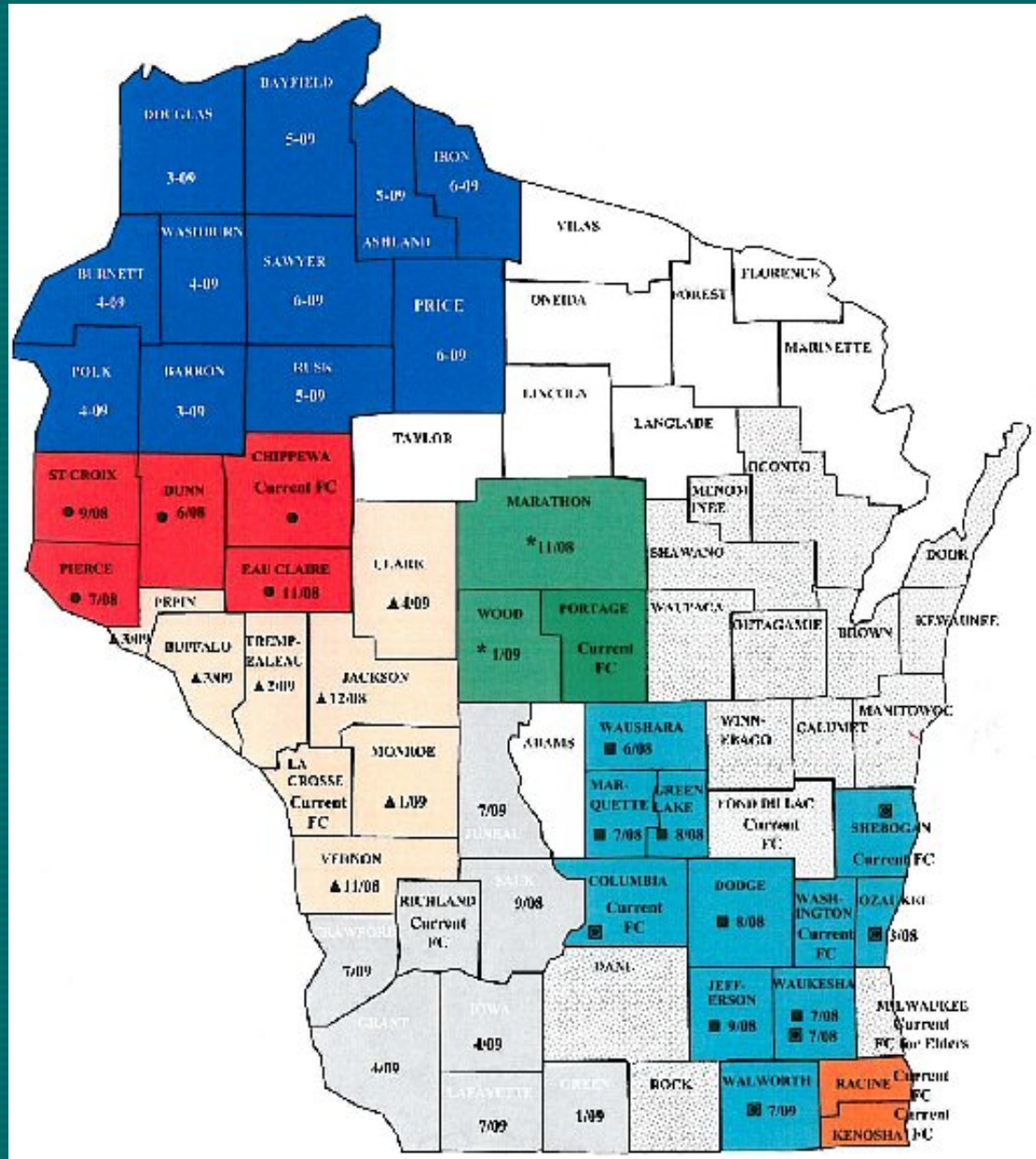


# Long-Term Care Initiatives in Wisconsin

- Care Wisconsin
- ▲ West Central Consortium
- \* Community Care of Central Wisconsin
- ⓪ Community Care, Inc.
- Community Health Partnership
- Counties Participating in Ongoing Planning Consortia with Family Care Implementation Dates Unspecified, but Anticipated in 2009 or 2010

NOTE: Some planning consortia have designated tentative implementation dates, although DHFS has not procured a managed care organization to serve counties in these consortia as of May 1, 2008.



# What is Long-Term Care?

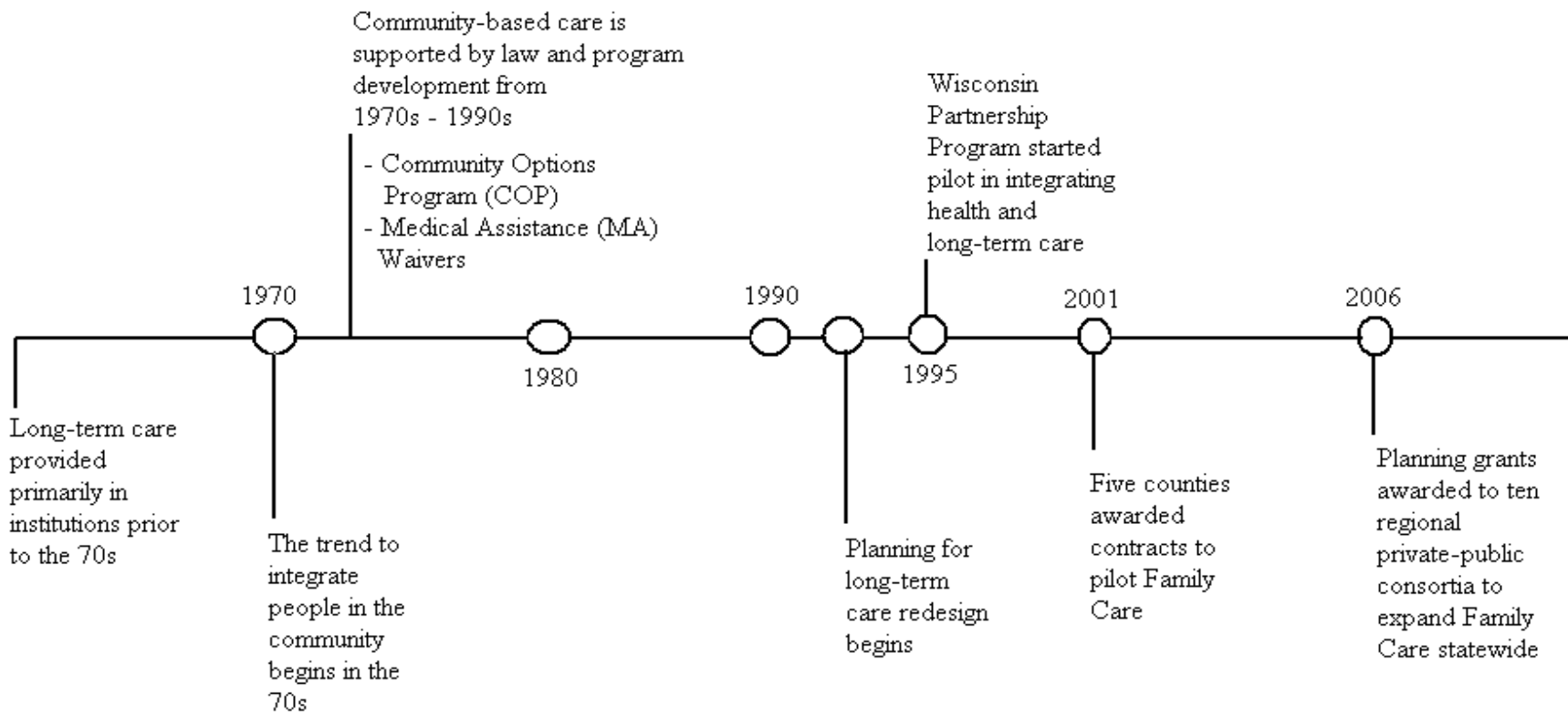
The wide range of social, personal, medical and financial services people need in the long-term as they grow older or if they have a disability.

# Community-Based Care in Wisconsin A Historical View

**Wisconsin has been viewed as a leader among states in establishing community-based, long-term care for many years.**

- Began state-funded, county-based community services in 1974.
- Community Options Program (COP) in 1981.
- Community Integration Program (CIP) for developmentally disabled in 1983.

# Long-Term Care Timeline in Wisconsin



# So, Why Reform a System?

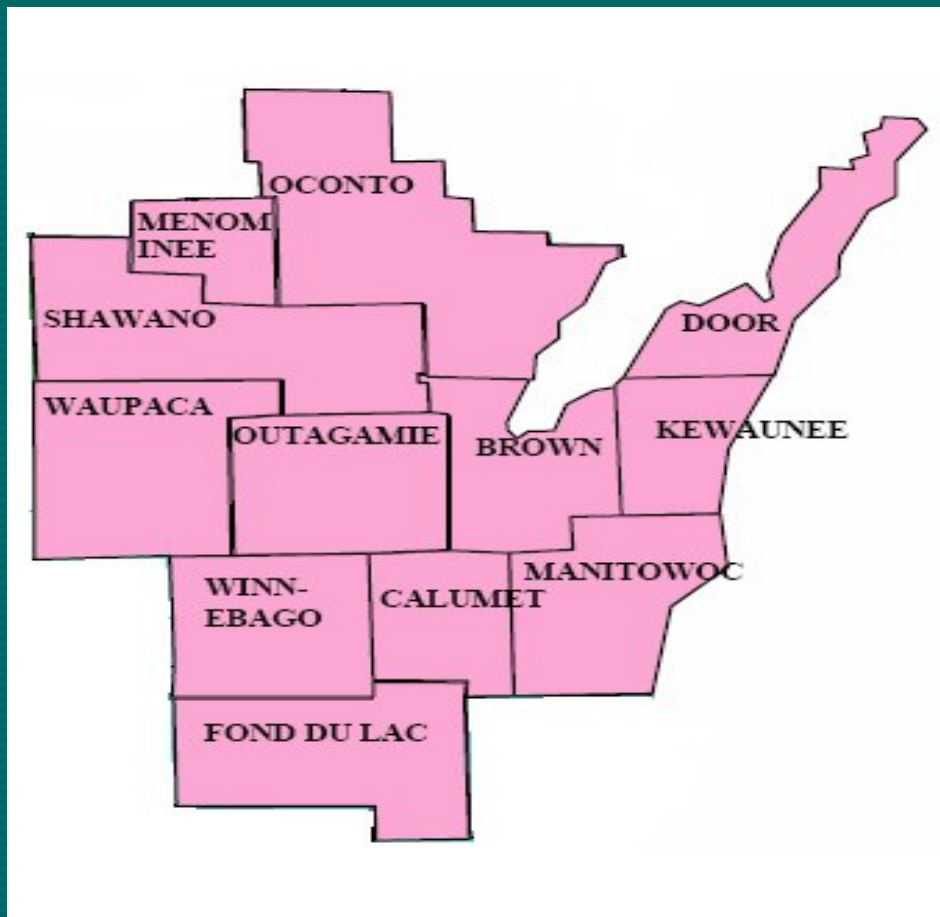
- Prioritizing institutionalized care over community care
- Growing waiting lists
- Increasing costs
- Decreasing funding

# SO, Why Reform a System?

- Prepare for aging boom
  - ✓ Need for long-term care projected to grow 45% by 2030
- Control public costs
  - ✓ Manage Medicaid budget
  - ✓ Manage taxpayer costs
- Promote prevention and planning

# NEW-LTCC

## Northeast Wisconsin Long-Term Care Consortium



Includes three partner tribes: Menominee, Oneida, and Stockbridge Munsee

# A Partnership of Counties and Tribes Working Together

- **Twelve counties**

Brown

Calumet

Door

Fond du Lac

Kewaunee

Manitowoc

Menominee

Oconto

Outagamie

Shawano

Waupaca

Winnebago

- **Three tribes**

Menominee

Munsee

Oneida

Stockbridge



# The NEW-LTCC Collaborative

- Reform the state's publicly-funded long-term care service system
- Formed a partnership to plan and develop an integrated long-term care delivery system across a twelve county and three tribe region.
- Received a planning grant with a completion date of June 2008.

# Comparing Systems

## Current System

- Entitlement to nursing home care: wait list for community care
- Specific types of service available
- Many different federal, state and county funding streams

## Improved System

- Entitlement to both community-based and nursing home care
- Single, expanded, flexible benefit package
- One primary funding stream

# Comparing Systems

## Current System

- No \$ incentive for intervention & prevention – person automatically enters nursing home
- Service authorization limited by available funds, or by state prior authorization

## Improved System

- Intervention & prevention in care plans; must provide services if condition deteriorates
- Service authorization by local teams with access to needed funding

# Current Long-Term Care

- **Family Care:** System that arranges and manages long-term care and works closely with acute and primary health care providers to better coordinate care and services.

30 Family Care Counties served by 4 Long Term Care Districts (Not including Fond du Lac County)

- **Partnership:** System that delivers long-term care and integrates acute and primary care that includes medical care.

18 Family Care/Partnership Counties served by 3 private non-profit organizations (Community Health Partnership, Care Wisconsin and Community Care, Inc.)

# Aging & Disability Resource Center

## Serving

### Calumet, Outagamie and Waupaca Counties

Calumet County  
Branch

206 Court Street  
Chilton, WI 53014  
920-849-1451  
1-866-739-2372

[www.co.calumet.wi.us](http://www.co.calumet.wi.us)

Outagamie County  
Branch

401 S. Elm Street  
Appleton, WI 54911  
920-832-5178  
1-866-739-2372

[www.co.outagamie.wi.us](http://www.co.outagamie.wi.us)

Waupaca County  
Branch

811 Harding Street  
Waupaca, WI 54981  
715-258-6400  
1-866-739-2372

[www.co.waupaca.wi.us](http://www.co.waupaca.wi.us)

[www.yourADRCresource.org](http://www.yourADRCresource.org)

# We Serve People in Calumet, Outagamie, and Waupaca Counties who:

- ✓ Are over age 60
- ✓ Have a developmental disability
- ✓ Have a physical disability
- ✓ Have mental health issues
- ✓ Have substance abuse issues
- ✓ Are young adults with disabilities who are transitioning to adulthood and related services
- ✓ Are families, caregivers, or advocates for any of these individuals

# Aging & Disability Resource Centers and Long-Term Care Reform

- A single source for the general public to get objective and reliable information about a broad range of community resources of interest to elderly people and people with disabilities.
- Service is provided at no cost and without regard to income and assets.
- Help people conserve their personal resources, health and independence.
- Reduce the demand for public funding for long term care by delaying or preventing the need.
- Growth of aging and disabled population means that more people will need assistance.

# Current and Proposed Aging and Disability Resource Centers May 1, 2008

Star = ADRC Application Submitted  
Grey = Letter of Intent to Apply  
Received

Total # of operational  
ADRC's = 25

Total # of counties with  
operational ADRC's = 28

Current # of applications in  
process = 7

Current # of letters of  
intent to apply = 3





# New, Yes. But Improved?

- Independent assessment of Family Care Pilots found:
  - Average savings \$452 per month
  - Reduced use of institutions
  - Maintained health and functioning

Assembly Committee on Medicaid Reform  
Department of Health and Family Services  
February 8, 2006

# **What's Being Considered by the NEW-LTCC?**

**Long-term care through a managed care delivery system which would serve:**

- People who are frail and elderly
- People who have a physical disability
- People who have a developmental disability

**And may:**

- Integrate acute and primary health care

# Decisions for NEW-LTCC

Determine benefit package (include all medical care, include some medical services, service array?)

		<b>PARTNERSHIP</b>
		<b>Home / Community Based Waiver Services</b>
	<b>FAMILY CARE</b>	<b>Medicaid Card Services – LTC Services</b>
	<b>Home / Community Based Waiver Services</b>	<b>Medicaid Card Services – Acute/Primary</b>
	<b>Medicaid Card Services – LTC services</b>	<b>Medicare Card Service</b>
<b>Description</b>	<p>Family Care is a comprehensive and flexible long-term care service system. When a person decides to enroll in Family Care, they become a member of a care management organization (CMO), which manages and delivers the Family Care benefit. The Family Care benefit combines funding and services from a variety of existing programs into one flexible long-term care benefit, tailored to each individual’s needs, circumstances and preferences.</p>	<p>Partnership is an integrated health and long-term care program for frail elderly and people with disabilities provided by community-based organizations. The goals of Partnership are to:</p> <ul style="list-style-type: none"> <li>- Improve quality of health care and service delivery while containing costs</li> <li>- Reduce fragmentation and inefficiency in the existing health care delivery system</li> <li>- Increase the ability of people to live in the community and participate in decisions regarding their own health care</li> </ul>
<b>Populations Served Eligibility Requirements</b>	<ul style="list-style-type: none"> <li>- Frail older adults (65 years or older, age 60 or older in Milwaukee County)</li> <li>- People with physical disabilities (17 years, 9 months or older)</li> <li>- People with developmental disabilities (17 years, 9 months or older)</li> </ul>	<ul style="list-style-type: none"> <li>- Medicaid-eligible, or dually eligible for Medicaid and Medicare</li> <li>- Age 65 or older for elder programs</li> <li>- Age 55 or older with a disability determination for disability</li> <li>- Elder programs</li> <li>- Age 18 – 55 with a disability determination for disability programs</li> <li>- Certified as needing care at the nursing home level (ICF-1, ICF2, SNF, or higher)</li> </ul>

# Decisions for NEW-LTCC

Determine structure for organization (public, private, public/private partnership, role of each organization?)

# Present System Medicaid Waivers

State of Wisconsin

Contract

## Calumet County Provides

- Care Management
- Nursing
- Daily living skills
- Representative payee

Contract

Provider Agencies

Contract

Provider Agencies

Contract

Provider Agencies

# Form 66.0301 with Other County Partners

**State of Wisconsin**

**66.031  
Agreement**

**Provides Family  
Care**

**County "A"**  
At risk for  
running  
Family  
Care

**County "B"**  
At risk for  
running  
Family  
Care

**County "C"**  
At risk for  
running  
Family  
Care

# Long Term Care District with Family Care Pilot County

State of Wisconsin

Contract

Long Term Care District

Provides Family Care

Contract

County "A"

Provides Care Management, CSP and Work Programs

County "B"

Provides Care Management, CSP and Personal Care

County "C"

No Care Management No Provided Services



# Join Partnership Project with Other County Membership

State of Wisconsin

Contract

## Partnership Organization

Provides Family Care and Family Care Partnership

Advisory Committees

Operations Council

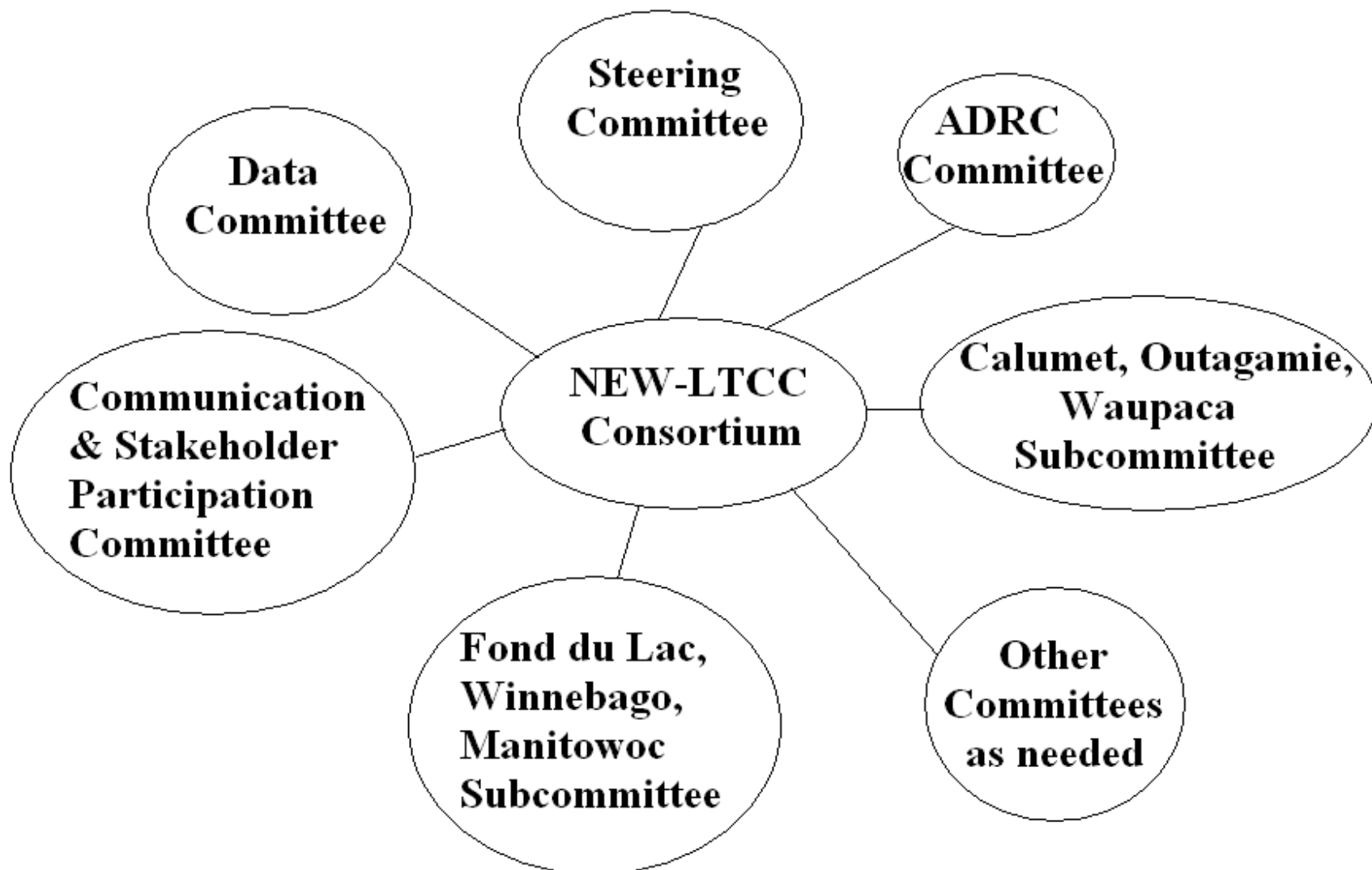
COUNTY "A"  
Provides Care Management, CSP and Work Programs

COUNTY "B"  
Provides Care Management, CSP and Personal Care

COUNTY "C"  
No Care Management  
No Provided Services

Contract

# Northeast Wisconsin Long-Term Care Consortium



**NORTHEAST  
WISCONSIN  
PARTNERSHIP CARE  
MANAGEMENT  
COALITION  
(NEW PCMC)**

# NEW PCMC GOALS

- To provide an alternative Family Care model for the Northeast Consortium
- To explore integrated acute/primary and long term care program benefit
- To explore maximum county influence and ability to maintain local integration

# MODEL DEVELOPMENT

- Developed nine organizational models
- Analyzed advantages and disadvantages of models
- Narrowed to three models

# INTEGRATED FAMILY CARE/PARTNERSHIP BENEFIT

- Researched benefits to consumers
- Researched financial and programmatic benefits to Care Management Organization
- Researched actual operation of an integrated benefit within Community Care, Inc.
- Discussed with implementing counties – Sheboygan, Washington, Jefferson, Sauk

# MODIFIED PRINCIPLES

- Integrated acute/primary and long term care benefit
- Maximum county influence and ability to maintain local integration of service
- Community Care, Inc. as a planning partner

# COMMUNITY CARE

## *Shared Values and Philosophy*

- Member-centeredness
- Transparency
- Openness – consumer forums, advisory committees, operations council and county representative on Community Care Board
- Flexibility in purchasing care management and services from counties and other key services



# NEW PCMC MODEL

State of Wisconsin

Contract

Community Care, Inc.

*Provides*

- Family Care
- Family Care Partnership
- PACE

NEW PCMC  
Advisory  
Committees

NEW PCMC  
Operations  
Council

Contract

COUNTY "A"  
Provides Care  
Management,  
CSP and  
Work Programs

COUNTY "B"  
Provides Care  
Management,  
CSP and  
Personal Care

COUNTY "C"  
No Care  
Management  
No Provided  
Services

# KEY MODEL ELEMENTS

- Community Care, Inc. is CMO with state contract
- Community Care, Inc. provides Partnership, Family Care
- Representative of each county on Community Care Board
- Local input through Advisory Committees and Operations Council
- Counties may contract for care management and other key services

# NEW PCMC MODEL

State of Wisconsin

Contract

Community Care, Inc.

*Provides*

- Family Care
- Family Care Partnership
- PACE

NEW PCMC  
Advisory  
Committees

NEW PCMC  
Operations  
Council

Contract

COUNTY "A"  
Provides Care  
Management,  
CSP and  
Work Programs

COUNTY "B"  
Provides Care  
Management,  
CSP and  
Personal Care

COUNTY "C"  
No Care  
Management  
No Provided  
Services

# NEW PCMC MODEL ADVANTAGE

- Shared values
- Community Care track record, transparency, flexibility, infrastructure
- Choice of Family Care Partnership or Partnership benefits
- Larger risk pool

- continued -

# NEW PCMC MODEL ADVANTAGE

- Options for county care management and other key services
- Local influence through consumer forums, Community Care Board representatives, advisory committees and operations council
- Community Care experience in Family Care expansion

# NEW PCMC Timeline

ACTIVITY	CALUMET	OUTAGAMIE	WAUPACA	OTHERS
Begin Enrollment	January 2010	April 2010	July 2010	January 2011
Stakeholder Involvement	On-going and continuous	On-going and continuous	On-going and continuous	On-going and continuous
Healthcare Network Development	September 2008 to June 2009	September 2008 to June 2009	September 2008 to June 2009	September 2008 to June 2009
Commitment for Request for RFP	December 1, 2008	December 1, 2008	December 1, 2008	December 1, 2008
Build Long-Term Care Network	January – December 2009	January – December 2009	January – December 2009	January – December 2009
Conduct staff training	January 2009; on-going	January 2009; on-going	January 2009; on-going	January 2010; on-going
Submit SNP Application	March 2009	March 2009	March 2009	March 2009
Request release of RFP	June 2009 for July RFP Release	June 2009 for July RFP Release	June 2009 for July RFP Release	June 2009 for July RFP Release
Submit RFP Response	August 2009	August 2009	August 2009	August 2009
ADRC Application and Certification	August – November 2009	November 2009 – Feb. 2010	January to May 2010	July 2010 – November 2010
County Board Resolutions	August 2009	November 2009	February 2010	August 2010
MCO Certification	September to December 2009	September to December 2009	September to December 2009	September to December 2009
Open ADRC	November 2009	February 2010	May 2010	November 2010
Finalize MOU	November 2009	February 2010	May 2010	November 2010
Open facility/office	November 2009	February 2010	May 2010	November 2010

# KEY TIMELINES

## FIRST ROUND

- County Commitment by December 1, 2008
- Special Needs Application by March 2009  
(one application time per year)
- Request RFP (Request for Proposal) for covered counties by June 2009
- Calumet -- January 2010
- Outagamie -- April 2010
- Waupaca -- July 2010
- Others -- January 2011

# New Roles in a Reformed System

- State
- Care Management Organization
- County



# Role of the State of Wisconsin

- Provides statewide fiscal, regulatory and quality oversight
  - ✓ Care Management Organizations
  - ✓ ADRCs
- Legislative changes to accommodate reform as designed
  - ✓ Funding
  - ✓ Statutory changes

# Role of Care Management Organization

- Bears financial risks of capitation
- Contracted with the state to provide consistent level of long term care
- Partners with counties in day-to-day provision of long-term care services
- Tailors the delivery of care to eligible recipients based on their needs

# Role of County

- Provides local oversight through ADRC Consortium Committee and a regional long-term care council
  - ✓ Structural formation in development
- Advisory Committee to the Care Management Organization
- Operations Council to the Care Management Organization
- Operates Aging and Disability Resource Centers (ADRCs)
- Cross-county collaboration for efficiencies and best practices
- County Boards must approve participation in redesigned system

# What's next?

- Education of stakeholders (County Board/Staff, Consumers and Providers)
- Negotiation with the state
  - ✓ Funding and timeline